



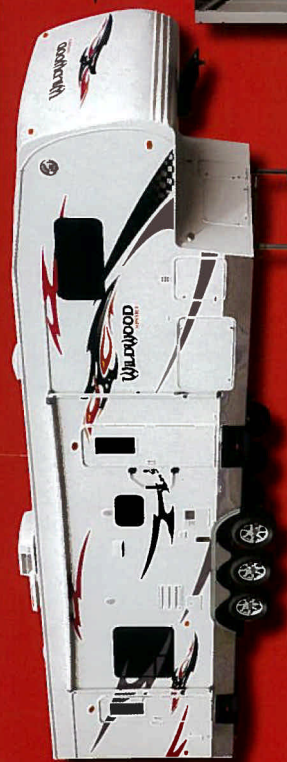
XL LITE 23 PLSRV SHOWN WITH OPTIONAL INTERIOR

XL STANDARDS

- Deluxe Gel-Coat Fiberglass Exterior
- Wide Body (102")
- 12" Box in Cargo Area
- 26" LCD TV
- AM/FM CD Stereo w/ DVD Player
- 15" Aluminum Rims
- 50 Amp Electrical Service
- Triple Axle
- Water Filter System (10,000 gal.)
- Fantastic Fan in Bathroom
- Swing Arm Entry Assist Handle
- Slate Linoleum
- Black Frame Tinted Windows
- T3.5K Ducted Air
- Shower Surround w/ Glass Door
- 6 gal. Gas/Electric Water Heater
- Generator Box with Wire
- Optional Fuel Station (Gasoline)
- E-Track Tie-Down Bars
- Dove Tail Cargo Area
- Vapor Barrier Wall
- One Piece Diamond Tuff Deck Cargo Area
- Diamond Plate Rolled Side Metal (Ext.)
- Diamond Tuff Deck Ramp Threshold
- Minimum 84" Ceiling Heights

XL OPTIONS

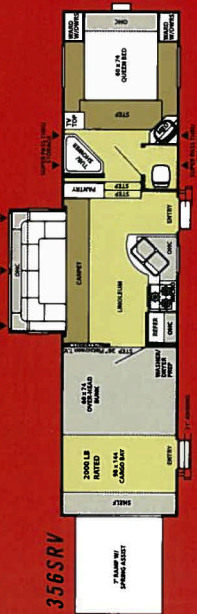
- 10 Gallon G/E Water Heater
- 15K BTU A/C IPO 13.5
- 5.5 Kw Onan Gas Generator
- Dual Electric Queen Beds in Cargo Area
- Free Standing Table and Chairs
- Thermostatically Controlled Heated Tanks
- Day/Night Shades
- Carefree Aid-A-Wall
- Double Hide-A-Bed
- iPod Docking Station
- Exterior Speakers



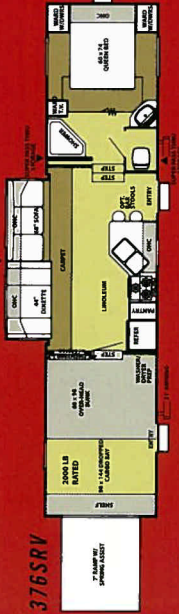
XL 376SRVBS

XL SPECS

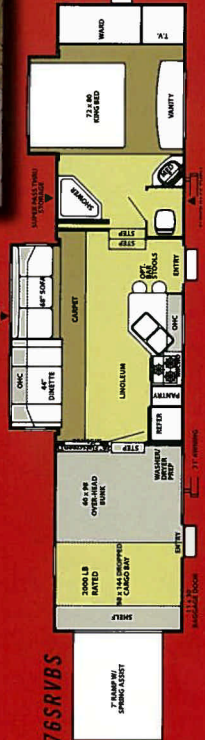
	356SRV	376SRV	376SRVBS
Hitch Weight (lb)	2400	2550	2640
AXLE Weight	8995	9590	10815
Dry Ship Weight	11385	12140	13455
GVWR	17000	17790	17800
CCC (Cargo Capacity)	4662	5650	4425
Ext Length	36'5"	38'8"	41'8"
Int Height	12'2"	12'2"	12'2"
Int Height	84"	84"	84"
Fresh Water Can (gal)	84	84	84
Black Water Can (gal)	32	32	32
Grey Water Can (gal)	64	64	64
Tire Size (in)	15"	15"	15"
Awning Size (ft)	21'	21'	21'



356SRV



376SRV



376SRVBS

DUAL ELECTRIC QUEEN BED OPTION FOR THE CARGO AREA AVAILABLE ON ALL 3 MODELS!