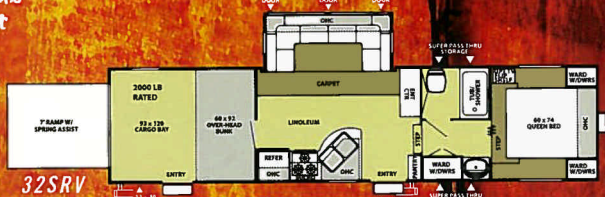
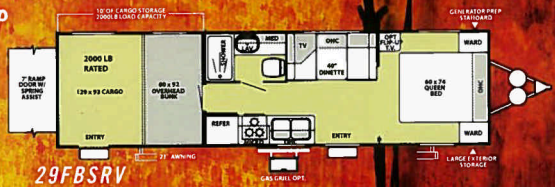
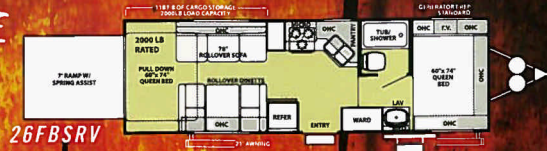


WILDWOOD SPORT LE TOY HAULERS

29 FBSRV LE



STANDARD FEATURES

- 3/8 Walk on Roof
- Upgraded Graphics Package
- Diamond Plate Rock Guard (TT)
- Dove Tail Cargo (Most floorplans)
- Swing Away Entry Assist Handle (FW)
- Generator Box and Wire
- Heated Fresh Water Tank
- 7' Ramp Door with Extension
- 6 -8,000 lb. D-Rings
- 2,000 lb. Cargo Capacity

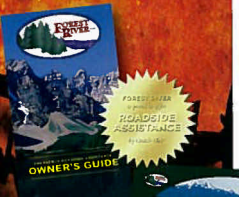
POPULAR OPTIONS

- 4.0 Gas Generator or 3.6 LP
- Electric Front Jacks
- Ducted A/C
- Exterior Speakers
- Care Free Add-A-Wall
- Hid-N-Screen
- Wash Down Kit
- Fuel Station - 28 Gallons
- Indoor/Outdoor Carpet
- Tuff Deck Flooring
- Tinted Glass
- 15K Ducted AC

| | 26FBSRV | 27SRVS | 29FBSRV | 32SRV |
|-----------------------|---------|--------|---------|--------|
| Hitch Weight (lb) | 950 | 1515 | 1310 | 2040 |
| Axle Weight | 5560 | 5965 | 6170 | 7570 |
| Dry Ship Weight | 6510 | 7675 | 7480 | 9610 |
| GVWR | 11110 | 11675 | 11470 | 14040 |
| CCC (Cargo Capacity) | 4012 | 4000 | 3402 | 3626 |
| Ext Length | 28' 6" | 31' 3" | 33' 6" | 34' 6" |
| Ext Height | 11' 6" | 11' 6" | 12' 2" | 12' 2" |
| Int Height | 80" | 80" | 80" | 84" |
| Fresh Water Cap (gal) | 70 | 70 | 70 | 70 |
| Black Water Cap (gal) | 32 | 32 | 35 | 32 |
| Grey Water Cap (gal) | 43 | 32 | 32 | 64 |
| Tire Size (in) | 15" | 15" | 15" | 16" |
| Awning Size (ft) | 21' | 18' | 18' | 21' |

PEACE OF MIND.

Forest River has yet another exclusive feature to offer. One year of free roadside assistance will be given to every 2008 Wildwood customer. This is just one more way to say "Thank you" and to ensure



WILDWOOD SPORT INTERIOR OPTIONS